



Task Title: Mining Safety Part 2

OALCF Cover Sheet – Practitioner Copy

Learner Name: _____

Date Started: _____

Date Completed: _____

Successful Completion: Yes ☐ No ☐

Goal Path: Employment ☐ Apprenticeship ☐

Secondary School ☐ Post Secondary ☐ Independence ☐

Task Description:

Read a health and safety poster to understand Mining safety in workplace operations.

Main Competency/Task Group/Level Indicator:

- Find and Use Information/Interpret documents/A2.2
- Understand and Use Numbers/Manage data/C4.1

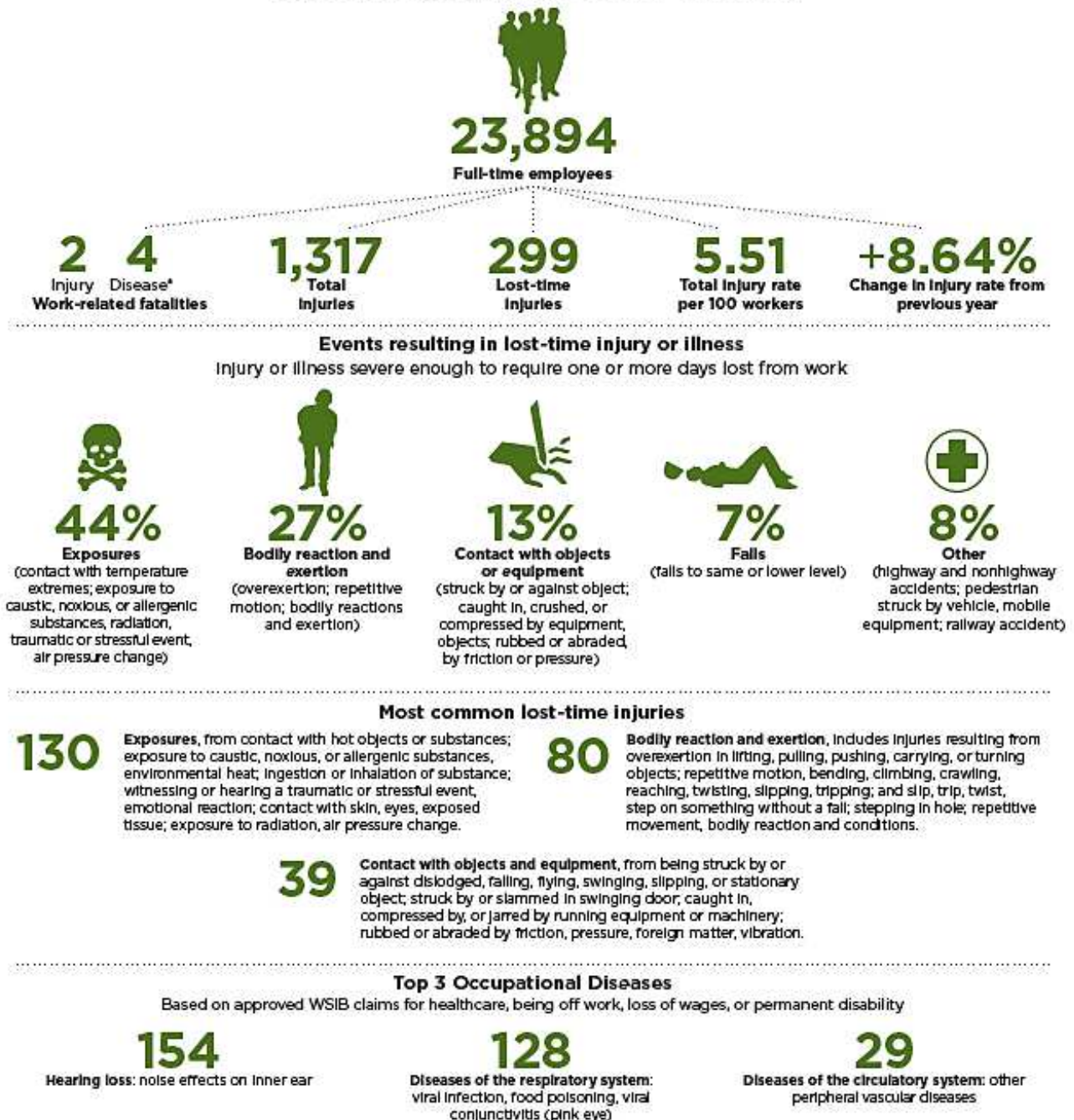
Materials Required:

- Pen/pencil and/or digital device

Learner Information

The mining industry is made up of various occupations which include driving different pieces of equipment on and off the jobsite. In all occupations there is a focus on safety on the job. Scan the **Workplace Health and Safety Snapshot for Ontario Mining Sector in 2022**.

Workplace Health and Safety Snapshot for Ontario Mining Sector in 2022



*Disease fatality claims with a fatality effective date of 2022 Source: Workplace Safety and Insurance Board Enterprise Information Warehouse as of March 31, 2023.
NAICS codes: 212392, 212397, 10200, 212220, 212232, 212233, 212299, 212314, 212315, 212316, 212317, 212326, 212393, 212394, 212395, 212398, 213117, 213119. WSN June 2023.



1-888-730-7821 Toll-free Ontario
705-474-7233
workplacesafetynorth.ca
in f y t

For more detailed statistics and trends
workplacesafetynorth.ca/resources/mining-statistics

Work Sheet

Task 1: How many full-time employees are there in the Ontario Mining Sector?

Answer:

Task 2: What are the 3 most common lost time injuries?

Answer:

Task 3: What is considered a lost time injury?

Answer:

Task 4: List two ways an exposure injury can occur.

Task 5: Calculate the total number of Top 3 Occupational Diseases.

Task 6: What is the change in injury rate from the previous year?

Answer Sheet

Task 1: How many Full-time employees are there in the Ontario Mining Sector?

Answer: 23,894

Task 2: What are the 3 most common lost time injuries?

Answer

- Exposures
- Bodily reaction and exertion
- Contact with objects or equipment

Task 3: What is considered a lost time injury?

Answer: Injury or illness severe enough to require one or more days lost from work

Task 4: List two ways an exposure injury can occur.

Answer: Any two of the following:

- Contact with temperature extremes
- Exposure to caustic, noxious or allergenic substances
- Radiation
- Traumatic or stressful event
- Air pressure change

Task 5: Calculate the total number of Top 3 Occupational Diseases.

Answer: $154 + 128 + 29 = 311$

Task 6: What is the change in injury rate from the previous year?

Answer: +8.64%

Performance Descriptors

Levels	Performance Descriptors	Needs Work	Completes task with support from practitioner	Completes task independently
A2.2	Performs limited searches using or two search criteria			
A2.2	Extracts information from tables and forms			
A2.2	Uses layout to locate information			
C4.1	Adds, subtracts, multiplies and divides whole numbers and decimals			
C4.1	Begins to interpret integers			

This task: Was successfully completed ☐ Needs to be tried again ☐

Learner Comments:

Instructor (print):

Learner (print):
